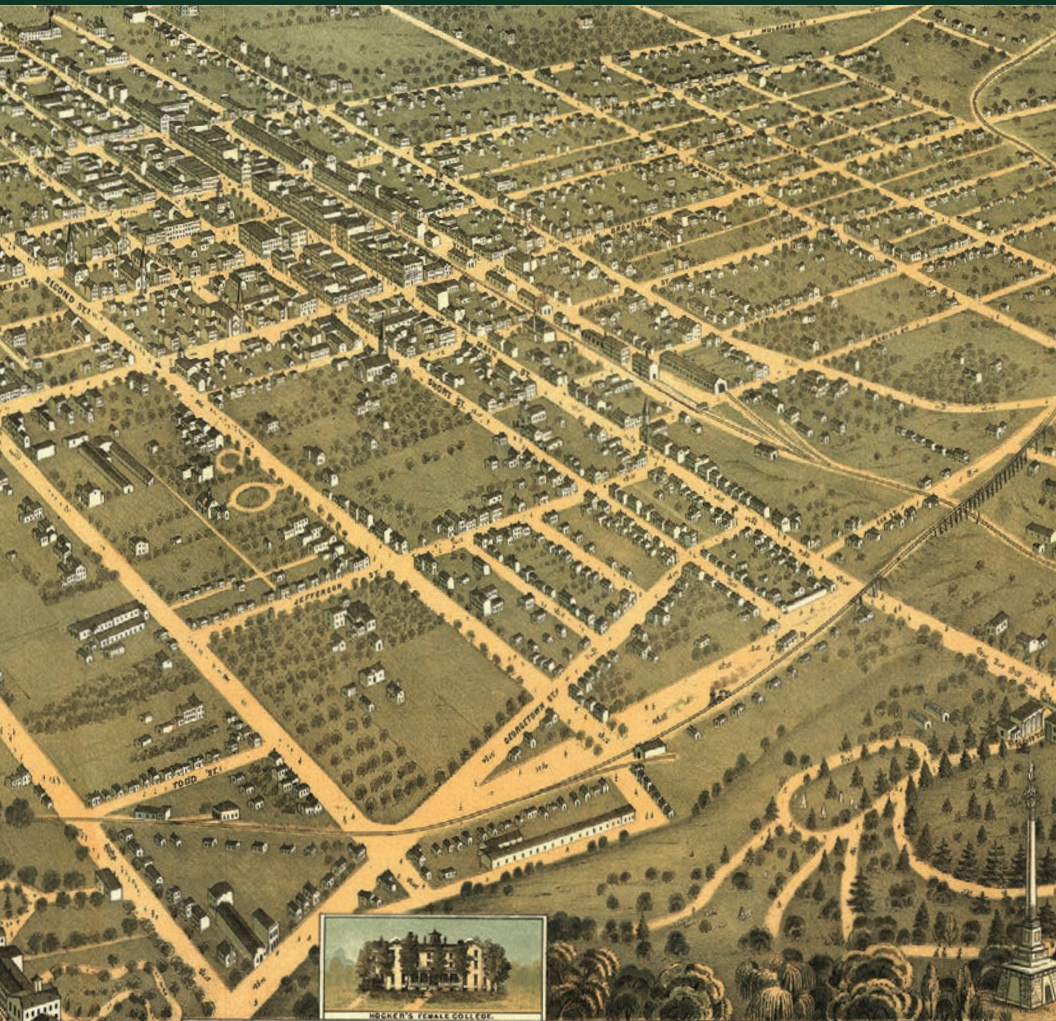


THE Bluegrass Historian

WINTER 2024



MOSHER'S FEMALE COLLEGE

BIRDS EYE VIEW OF THE CITY OF

LEXINGTON

FAYETTE COUNTY, KENTUCKY.

LOOKING 1871. SOUTH WEST.

- CHURCHES:**
- 16. First - Baptist
 - 15. Second - "
 - 14. Christian
 - 17. Episcopal
 - 13. Methodist North
 - 18. " - South
 - 21. First - Presbyterian
 - 21. Second - "
 - 22. Roman Catholic
 - 23. African Baptist
 - 24. " - Methodist



AGRICULTURAL & MECHANICAL COLLEGE

Our Mission: To inspire our future by collecting and preserving Lexington's history and telling our stories.
 Lexington History Museum, Inc. | www.lexhistory.org

Amanda L. Higgins, Ph.D.
Executive Director

Katrina Dixon
Curator & Exhibit Manager

Board of Trustees

James L. Dickinson, *Chair*
Retired Administrative Hearing Officer/ Attorney

Allen Eskridge, *Vice Chair*
E&A Consulting

Susan Lamb, *Treasurer*
Fayette County Clerk

Shawn Livingston,
Secretary
UK Libraries

Amelia Martin Adams
Stoll Keenon Ogden

Jeff Beard
Retired

James Coleman
Coleman Crest Farm

Roda Ferraro
Keeneland Library

Natalie Frost Davis
Kirkpatrick & Co

Laura Cullen Glasscock
The Kentucky Gazette

Alan Lytle
WUKY

Kathy Plomin

Terrance Smith
Fender Funeral Directors

Molly Thomas
Chase Bank, retired

Mark Turner
Commerce Lexington

Board Emeriti

Bill Ambrose
Dupree Financial Group

Brad Canon, Ph.D.
University of Kentucky, retired

Bill Swinford
Attorney

Lexington History Museum, Inc.

PO Box 748
Lexington, KY 40588

BECOME A LEXHISTORY MEMBER!

Lexington History Museum members support our mission to inspire our future by collecting and preserving Lexington's history and telling our stories. Membership dues help fund our exhibitions, research, education programs, and more!

Lexington History Museum members not only make a positive impact on Lexington's cultural community, they also receive:

- Free admission to the Lexington History Museum, including the permanent exhibition, *All Paths Lead to Lexington*
- Discounted admission for guests of members during regular museum hours
- Free admission to LexHistory events (up to 4 per year)
- *The Bluegrass Historian* newsletter
- Special members-only mailings and emails
- Invitations to members-only events, exhibition openings, and programs
- Discounted admission to select LexHistory-supported events
- Free admission, gift shop discounts, and much more to 400 organizations in more than 45 states across the country through the *Time Travelers Network**

MEMBERSHIP LEVELS

LexHistory Membership fees run on an annual, calendar year basis.

Student/Educator \$25

Individual \$40

Household** \$80

***free admission for up to six household members*

Join today! Online, in person, or by mail.

Scan the QR code at right or visit

lexhistory.org/join. Downloadable form available.



* **Time Travelers** is a free reciprocal membership network for historical museums, sites, and societies throughout the United States. Currently, the *Time Travelers* program includes over 400 organizations in more than 45 states across the country. Members of these organizations can receive a variety of exclusive benefits and privileges, such as free admission, gift shop discounts, and much, much more.

250Lex The year 2025 is a BIG one for Lexington—we'll be celebrating the 250th anniversary all year long! The Mayor's 250Lex commission, on which museum Executive Director Mandy Higgins serves, has engaging, interesting, and memorable events planned for the whole year, including a New Year's Eve kick-off at the Central Bank Center!

Join us at the Museum on President's Day, February 17, 2025, as part of 250Lex's History Hop. LexHistory, the Mary Todd Lincoln House, and Ashland, the Henry Clay Estate, will be open and free to the public for visitation that Monday. At the Museum, we'll have civic focused activities for students, our horse hands and dry stacked stone fence interactive elements, and a chance to preview the new exhibit space.

To stay up-to-date on all things 250Lex, visit their website, 250Lex.com!



UPCOMING EVENTS AT THE MUSEUM

January 17—Gallery Hop: *Daughters of the American Revolution Captain John Waller Chapter and Transylvania Chapter displays*

February 8—Revolutionary Girl Dreaming + Madame Mentelle
Chautauqua performance by Simonetta Cochis

February 19—History Hop for 250Lex (*Visit the Museum between 10:00 am and 3:00 pm with free admittance*)



Among Women

There's still time to view *Among Women: 130 Years of the Woman's Club of Central Kentucky!* Included in general admission to the Museum, *Among Women* weaves the impressive history of the club with important milestones and developments in Lexington's history.

See it while you can—the exhibit will close February 15, 2025!

About the cover: 1871 Bird's Eye View of Lexington, Kentucky, drawn by Albert Ruger. For more photo credits, please see the last page of this issue.





Expanded
Opportunity
Expanded
IMPACT

Visitors to our expanded gallery space in the Thomas Hunt Morgan House will be able to see the grand staircase and other beautiful architectural details.

In July, the Lexington History Museum expanded our lease to include the entirety of the Thomas Hunt Morgan House at 210 North Broadway. With the Blue Grass Trust for Historic Preservation now headquartered at Hopemont (201 North Mill Street), LHM staff were able to relocate offices to the second floor of the Thomas Hunt Morgan House. We were able to consolidate our collection onsite—meaning the collection, for the first time in more than a decade, is under one roof and accessible by the Museum staff every day. Most excitingly, we will be able to open the front two rooms of the house for expanded interpretation. The Parlor will include exhibits about the Hunt Morgan family, especially the house's namesake Thomas. The Community Salon will



be open for use by groups looking for an intimate meeting space. We will utilize it for short-term or pop-up exhibits, like those featured in Gallery Hop. We are so excited to share these spaces with our visitors.

And that's not all! We are developing a guided house tour, during which visitors will learn more about the architecture of the home, its inhabitants, and view Dr. Thomas Hunt Morgan's dry sink on the third floor.

With this expansion we have the opportunity to make an even greater impact in Lexington—sharing more of our history with the public and serving as a community gathering point through our salon space.

You can help us by donating to our *Expanded Opportunity Expanded Impact* campaign today!



Scan to Donate



Sponsored SPACES

With our expanded footprint, we have new sponsorship opportunities as well. Now, with a yearly investment, your business or family name can adorn our exhibit or collection spaces.

Sponsors of spaces within the Lexington History Museum will be recognized with prominent on-site signage in their respective designated areas of the Thomas Hunt Morgan House and in all publicity related to events and activities taking place in the sponsored space.

MAIN EXHIBIT HALL.....	\$10,000
HOUSE TOUR.....	\$10,000
WELCOME CENTER.....	\$5,000
ROTATING GALLERY.....	\$7,500
THE PARLOR	\$5,000
COLLECTIONS AND ARCHIVES	\$5,000
COMMUNITY SALON*	\$5,000

**This will now become the Keeneland Community Salon!*

For more information, contact Executive Director Mandy Higgins at mandy.higgins@lexhistory.org

Additional Sponsorship Opportunities Available for:

THE BLUEGRASS HISTORIAN LECTURES AND EVENTS and WIKILEX

Please Consider Making a Planned Gift to Lexington History Museum!

What is Planned Giving?

Planned giving, also known as gift planning or legacy giving, is a heartfelt commitment to support an organization beyond one's lifetime. This act often extends the generosity an individual or couple has shown during their lives, but on a grander scale.

Unlike annual gifts, planned gifts are set for the future, usually as part of financial or estate plans. These gifts, often arranged through a will or trust, come to fruition after the donor has passed away. They are usually coordinated with the assistance of professional advisors, attorneys, and/or insurance agents.

It is important to remember that planned giving is not restricted by your current wealth. Planned gifts tend to be larger than lifetime donations because they can include a variety of assets that might not be eligible for gifting during one's lifetime, such as life insurance policies, retirement assets, equity, or real estate holdings.

Because planned giving typically reflects your values and beliefs, it can be deeply personal and ensure that your legacy is both impactful and enduring, meaning that even small contributions throughout your life can culminate in a significantly greater and more meaningful gift.

Types of Planned Giving

There are a few different ways to make a major gift, each with the potential to significantly impact an organization. Planned gifts come in several forms, each distinct and beneficial in their own unique way.

Some planned gifts provide lifelong income to families while others use estate and tax planning to provide for charity and heirs in ways that maximize gifts or the impact on an estate.

Some of the more common types of planned gifts include:

- **Bequest by Will or Living Trust:** Naming the Lexington History Museum in your will or living trust enables you to support the Museum and retain complete control over the assets during your lifetime while earning a full charitable deduction on estate taxes. This type of gift—called a charitable bequest—can be a specific dollar amount, a percentage or all of your estate, or what remains after other bequests are made.

Sample Bequest Language

If you are using an attorney to help define your estate plan, here's some sample language you can use to help define your intentions. As with all legal documents, please follow the advice of your attorney for the exact wording of your bequest.

Bequest of a Specific Dollar Amount

I hereby give, devise, and bequeath \$(DOLLARS) to the Lexington History Museum, a nonprofit organization located at 210 North Broadway, Lexington, KY 40508, Federal Tax ID #61-1342561, for the Lexington History Museum's general use and purpose.

Bequest of Specific Real Estate

I hereby give, devise, and bequeath all of the rights, title, and interest in and to the real estate located at (ADDRESS OR DESCRIPTION OF PROPERTY) to Lexington History Museum, a nonprofit organization located at 210 North Broadway, Lexington, KY 40508, Federal Tax ID #61-1342561, for the Lexington History Museum's general use and purpose.

Percentage Bequest

I hereby give, devise, and bequeath XX percent (XX%) of my total estate to Lexington History Museum, a nonprofit organization located at 210 North Broadway, Lexington, KY 40508, Federal Tax ID #61-1342561, for the Lexington History Museum's general use and purpose.

Residual Bequest

I hereby give, devise, and bequeath to the Lexington History Museum, a nonprofit organization located at 210 North Broadway, Lexington, KY 40508, Federal Tax ID #61-1342561, (ALL OR A PERCENTAGE) of the rest, residue and remainder of my estate to be used for the Lexington History Museum's general use and purpose.

- **Charitable Remainder Trust:** A Charitable Remainder Trust is a qualified trust that pays income to beneficiaries. After all income payments have been completed, the remainder is distributed to qualified charities. With this trust you are able to bypass capital gains tax, increasing income, and receiving a charitable income tax deduction. (NOTE: LexHistory does not serve as the Trustee. Please consult with your legal or financial advisor on establishing a Trust that designates LexHistory as the beneficiary.)
- **Charitable Lead Trust:** Through a Charitable Lead Trust, you and your legal or financial advisor select assets to fund a lead trust: the charity receives a fixed annual payout from the trust, and the remainder goes to your beneficiaries at the end of the charity's payout term. (NOTE: LexHistory does not serve as the Trustee. Please consult with your legal or financial advisor on establishing a Trust that designates LexHistory as the beneficiary)
- **Named Endowment:** With a Named Endowment, you can leave property or money in an endowment via an Endowment Agreement with the Lexington History Museum

continued on next page

What Are the Benefits of Planned Giving?

Planned Giving offers you the opportunity to provide long-term support to LexHistory while establishing a lasting legacy and leaving a meaningful memory.

Some of the benefits of Planned Giving include:

- **Opportunity for Major Gifts:** Planned giving enables you to leave a significant gift that might not have been possible during their lifetime due to financial constraints.
- **Estate Tax Exemption:** Charitable gifts are often exempt from estate tax, ensuring that more of the gift goes directly to the organization.
- **Capital Gains Tax Avoidance:** You can avoid capital gains taxes when transferring assets as part of a planned gift, thereby maximizing the charitable contribution.

Types of Planned Giving, continued

that defines the designated use of the generated income from the invested endowment corpus. (NOTE: Endowment funds for the Lexington History Museum are currently managed by the Blue Grass Community Foundation)

- **Life Insurance:** Gifting a life insurance policy allows you to make a significant legacy gift to the Lexington History Museum with tax benefits that you can enjoy during your lifetime. Here are some options you may wish to consider:

Transfer Ownership of Your Policy

To make a permanent gift of life insurance to LexHistory while you're still alive, you can transfer ownership of your policy to the museum, allowing LexHistory to receive the death benefit and control the policy once you've passed away.

Name LexHistory as a Beneficiary

Naming LexHistory as the beneficiary of your life insurance policy allows you to retain ownership while still donating the death benefit after you pass.

Give an Annual Gift Through Dividends

If your policy has a cash value component, it may pay out dividends when the insurer performs well, which you can cash and use as charitable donations.

Please consult with your insurance agent or financial advisor to determine how to use your life insurance to support the Lexington History Museum.

MAKE A BIG IMPACT IMMEDIATELY

Using a Qualified Charitable Distribution (QCD) from your IRA, 401K or other retirement assets by December 31

The IRS allows IRA owners aged 70½ or older to transfer up to \$100,000 tax-free each year to charity through Qualified Charitable Distributions (QCDs). For those 73 or older, QCDs count toward Required Minimum Distributions (RMDs). Married couples can exclude up to \$200,000 if both meet the age requirement and have IRAs.

Normally, IRA distributions are taxable, but QCDs are tax-free if paid directly to a charity. The QCD option is available regardless of whether an eligible IRA owner itemizes deductions.

To set up a QCD and make a major gift to LexHistory by year-end, contact your IRA trustee or financial advisor to complete the transaction by December 31. Please make sure that your QCD is made directly by the IRA trustee to LexHistory.

INVESTING IN THE THOMAS D. CLARK ENDOWMENT

Endowments are assets, typically cash invested in equities, bonds, or other vehicles, set aside to grow over time through earned interest, with the original assets, or “corpus,” being added to over time. The primary aim of our endowment is to keep the principal intact and use the annual investment income for our ongoing operations and special purposes. Our ultimate objective is to grow the endowment to approximately \$10 million to ensure the long-term stability and permanence of the Lexington History Museum.

Please consider using one of the Planned Giving methods featured above to invest in the Thomas D. Clark Endowment Fund.

DONOR RECOGNITION

Thomas D. Clark Endowment Investors
(Unrestricted Endowment Gifts)
Pledged over a maximum of five years

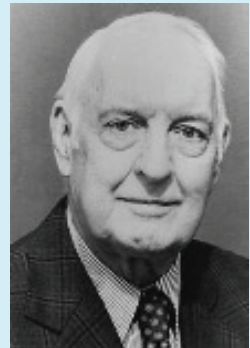
Thomas D. Clark Society \$5,000 – \$9,999

Thomas D. Clark Fellows \$10,000+

ABOUT DR. THOMAS D. CLARK (1903–2005)

Dr. Thomas D. Clark was one of the four founding members of the Lexington History Museum when it was created in 1998 and was a key figure in its early success.

Dr. Clark was an American historian renowned for preserving a significant portion of Kentucky’s printed history, which became a core collection in the Kentucky Department for Libraries and Archives. Known as the “Dean of Historians,” he is best remembered for his 1937 work, *A History of Kentucky*, and was named Historian Laureate of the Commonwealth of Kentucky in 1991.



Born in Louisville, Mississippi, Clark’s early education was limited, but he eventually pursued higher education at the University of Mississippi and Duke University, where he earned his doctorate in history. He became a professor at the University of Kentucky in 1931, where he built the history department into a major doctoral program and played a crucial role in preserving Kentucky’s historical documents. His efforts led to the establishment of the Kentucky Archives Commission in 1957. Clark was a respected adviser on various issues, including conservation, fiscal responsibility, and human rights, and remained influential throughout his career.



Major Milestones

The year 2025 is an exciting time for Lexington—we'll be celebrating our 250th anniversary all year long. In addition, here are several Lexington mainstays which also have impressive milestones!

MILWARD FUNERAL DIRECTORS

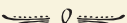
In 1825, Joseph Milward, the first of six generations of Milwards to lead Milward Funeral Directors, opened a cabinet and furniture business in Lexington, partnering with John Baxter. The furniture shop stood on South Broadway, near the current downtown

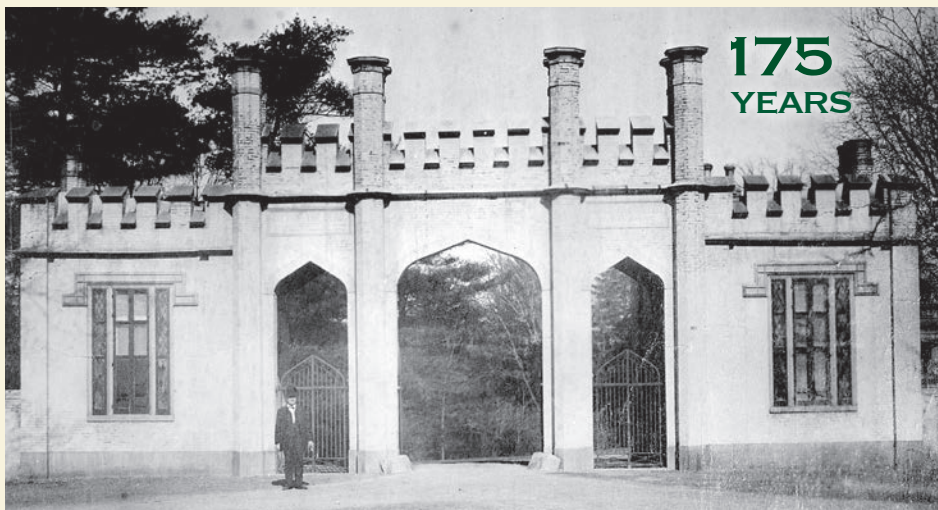
Milward location. As was common for furniture makers at this time, the pair began to construct caskets and provide aid for grieving families in Lexington. Within a decade, Joseph Milward was the sole proprietor of the business. His son, Col. William Rice Milward, separated the furniture shop from the funeral business. In 1905, under Col. Milward's direction, Milward Funeral Directors opened at its current location, 159 North Broadway. Col. Milward's son, William "Will" Milward, Jr. purchased the horse-drawn hearse in 1895 (*pictured above*). It is currently in the Kentucky Horse Park Collection.



THE LEXINGTON CEMETERY

Though chartered in 1848 and open for burials in late 1849, the Lexington Cemetery's gateway (*pictured on next page*) and buildings were completed by John McMurtry in October 1850. By the end of 1850, 86 burials had been conducted, including the reinterment of several individuals who had previously been buried in community cemeteries throughout the city. The first burial plot was purchased on August 18, 1849, for Robert S. Boyd, who had died from cholera in June of that year. He and his infant son were reburied on October 2, 1849, and a monument commemorates that first event in the cemetery garden.

The Lexington Cemetery is the resting place for many Lexingtonians, including notable civic and business leaders, historical figures, celebrities and beloved town figures. In 1852, following a 1200-mile funeral procession route by train, barge and carriage starting in Washington, D.C., with stops for ceremonies in Baltimore, Philadelphia, New York and Cincinnati among other cities, Senator Henry Clay was laid to rest here. The Henry Clay Monument and mausoleum stands in section M of the cemetery, with the figure of Clay facing east toward Ashland, his estate. The monument, now the property of the Lexington Cemetery, was renovated and restored by the Lexington-Fayette County Urban Government in 1976. 



THE RED MILE

Lexington is the Horse Capital of the World, so it's only fitting that we have a horse-racing anniversary in 2025. The Red Mile was founded on September 28, 1875, by the Kentucky Trotting Horse Breeders Association as a harness racing facility and is the second oldest harness racing track in the world. At The Red Mile, trotting horses pull sulkies (two-wheeled carts) and race under the lights. Their annual meet runs late July to early October. The Kentucky Futurity race is part of the "Circuit" (a series of races for two- and three-year-old trotters held at 20 tracks annually) and is the third leg of the Harness Racing Triple Crown.



The track is also home to the Round Barn Standardbred Stable of Memories, an octagonal building on the property. Prolific architect-builder John McMurtry built it during 1880-1882 as an exhibition hall for floral displays. Today, it is a popular event venue. In the early 20th century, the Round Barn was a stable for trotters. The U.S. Department of the Interior, through the National Park Service, added it to the National Register of Historic Places in 1977.

What's New at the Museum!

The Museum is excited to welcome a number of new items to our collection. We are counting on you to help us grow our collection so we can connect visitors with as many of Lexington's stories as possible.

A highlight of our fall donations is a collection of **Boy Scouts** materials from Central Christian Church that includes various items from Troops 4 and 6 as well as other troops. Items include Boy Scout and Scoutmaster handbooks and memorabilia, two boxes of textiles containing various pieces of uniforms, and boxes of ephemera ranging from 1922-2000 that include files, newspaper clippings, awards, and merit badges. The museum is also pleased to receive a two-man stretcher, a modern-era teepee made by scouts, and wooden Scouting Trails placard/sign. The large placard is divided into four trail sections: Eagle; God and Country; Silver; and 50 Mile Wilderness Trails, and includes name plates with dates ranging from 1946-1958.



THE PORTRAIT GALLERY

The Museum has acquired two original portraits (artist currently unknown) of John Hickman Hart and his wife, Luann Duncan Hart. John H. Hart was the son of John Hart and grandson of Nathaniel Hart of the Transylvania Company. John H. Hart's aunt Susannah Hart was married to Kentucky's first governor, Isaac Shelby. His great aunt and uncle were Lucretia Hart Clay and Henry Clay.

John H. Hart's family had homes on the Hart estate on Armstrong Mill Road, which included the historic home, Hartland, built by John Hart, where these portraits once hung. Hartland still stands on Winding Wood Lane. The Hartland neighborhood, developed beginning in the late 20th century, bears the name and some of the acreage associated with the historic tract.

Paintings donated by Mr. & Mrs. Robert Smith.



John Hickman Hart



Luann Duncan Hart

The Museum also recently acquired an **arch salvaged from the Bradford House** formerly at Second and Mill Streets. The house was razed in 1955—outcry over this spurred the establishment of the Blue Grass Trust—and today the site remains a parking lot. Also known as the Hart-Bradford house, the residence was purchased by *Kentucky Gazette* editor John Bradford from wealthy early settler Thomas Hart in 1806. (John Hickman Hart, whose portrait was recently donated to the Museum, was Thomas Hart's nephew.) The Harts and Bradfords hosted many gatherings in the home on Mill, including Henry and Lucretia Clay's wedding in 1799 and John Hunt Morgan's 1848 marriage to Rebecca Gratz Bruce.

Donated by Jane McNamara of the Blue Grass Shade Company, it was retrieved and reinstalled it in their shop at 122-124 N. Mill Street. When the Blue Grass Shade Company relocated to Romany Road in the Chevy Chase neighborhood, the arch went into storage.

OUR FIRST DIGITAL EXHIBIT

Lexington Honors Our Veterans

In November, the Museum partnered with the Mayor's Office and the LFUCG Commission on Veterans Affairs, Councilmember Liz Sheehan, and Stablemate Creative to install banners along Vine Street honoring the 24 Lexington members of the Kentucky Veterans Hall of Fame.

"Veterans are near and dear to my heart, and I am excited we are able to provide another opportunity to honor their service," Mayor Linda Gorton said. "It has been a goal of mine to provide more opportunities and support for our veterans than we have done in the past, and this program is another step forward."

The Museum was proud to help Lexington honor its veterans and share an entry point for learning more about the featured veterans, their service, and their community work after their time in the military.

While the banners are no longer on Vine Street, you can still view the exhibit—our first digital exhibit—at lexhistory.org/veterans.



Thank you to Our Supporters!

2023-2024 ANNUAL FUND INVESTORS

Kentucky Circle (\$5000+)

Hilary J. Boone Foundation
Karen McDaniel Bradshaw
Keeneland Foundation
Keeneland Association
LFUCG
John and Kathy Plomin
VisitLex

Bluegrass Circle (\$1000-\$4999)

Ann Bakhaus
James Dickinson and
Timothy Combs

Dorothy Cruther Cordray
Norwood and Judy Cowgill
Ann Todd Houlihan Dupree
Roda Ferraro
Honorable Order of
Kentucky Colonels
Kentucky Local History
Trust Fund
Lexington Directions
People's Bank Foundation
John W. and Elizabeth Phillips
University of Kentucky
Biology Department

Fayette Circle (\$500-\$999)

Blue Grass Community
Foundation
Linda Carroll and John Morgan
James Coleman
Marcia Cone
EcoReliant
R. Douglas Ezzell
Susan Lamb and
Diana L. Queen
John Paul and Judy Miller
Kitty Ann Portwood
Next City
C. William Swinford, Jr.

Lexington Circle (\$1-499)

Susan Abbott-Jamieson
Will and Amelia Adams
Elizabeth Anderson
Susan Andrew
Bob and Laura Babbage
Bob and Amy Back
Rogers Barde
Jeff Beard
Anthony and Eunice Beatty
Marsha Bloxom
Anne E. Bolton
Roger Boots
James and Melissa Bright
Shea Brown
Burcham Solutions Group
Shawn Burns
Kayla Bush
Bradley and Rosa Canon
Kelli Carmean
Erin Carmina
Tiffany Cook
Amanda Corbin
Lawrence and Margaret
Cowgill
Victoria Cruz-Falk
Laura Cullen Glasscock
Anastasia Curwood
Paula J. DeBoor
Angie Dennis
Katrina Dixon
Kim Dixon-DeRouche
Christine Donahoe
Greg and Beth Drake
David and Paula Duncan
Ashleigh Dunsmoor
Doris C. Elliott
Pace Cooke Emmons and
Andy Mead
Allen Eskridge and Randa
Remer-Eskridge
Ben and Laura Eubank
Nelson Fields and Terry
Lennie
Terry Foody
Jeffrey and Marcia Freyman
Erica Friis
Molly Galbraith
Lucia Gilchrist
Erin Goins
Rachel Hogg-Graham
Kentucky Humanities Council

Charles and Linda Gorton
Ken and Holly Grayson
Carol Gruedan
John and Carolyn Hackworth
Will and Nisa Hanna
Gary and Elizabeth Hansen
Lynette Hartmann
Phyllis Hasbrouck
Matthew and Amanda
Higgins
Jeff Hoagland
Cottrell-Holbrook Partnership
Fanny Hubart-Salmon
Robert and Sandra Ireland
Jerry and Kelly Johns
Jennifer Jones
Steve Kay and Rona Roberts
Laura Keller and
William Schweri
John and Linda Kelter
William Kenner
Laurie Ketcham-Schrick
Mark Kightlinger
Christine Kuhn
Timothy Kuryla
Elaine Landry
Rachel Laudan
Ruth G. Lawton
Dorothy Leist
Patrick and Jenny Lewis
Erica and Stephanie Lindsey
Shawn and Jane Livingston
Edward Logan
Anthony Burgett and
William F. Loggins
Alan Lytle
James and Paul Mallory
Mary Malone
Patricia Martin
Richard and Annette Mathy
Charles and Mary
McCormick
Mary McGaha
Sue McKaig
Martin McMahon
Josh Mers
Daniel H. Miller
Freddie L. Mills, Jr.
Angie Milton
Robert E. Milward
Richard and Sharon Moloney
Max Morris

Neil and Princess Nelson
Devert and Judy Owens
L. Edwin and Jean Ellen
Paulson
Karen Petrone and Ken
Slepyan
Brittany Petty
Tina Pickard
Monika Piot
Jeremey Popkin
Emily Posey
Jay and Laura Prather
Don Pratt
Graham and Barbara Priest
Mary Quinn Ramer
LouAnna RedCorn
Shelby Reynolds
Sarah Ritter
Brittany Rothemeier
Adam Ross
Nat and Judith Sandler
Barbara Scherrer
Terry and Julie Schickel
Susan C. Sears
Renee Shepard
Bill and Su Sims
Terry W. Smith
Whitney Smith
Jane L. Stanger
Alan Stein and Ginger Davis
Barbara Sterrett
Matthew Strandmark
Stuart Tobin
Joyce Toth
Alison Taylor-Tracy
Larry K. Trivette
Mark Turner
Vicki Vance
Jewel Vanderhoef
Mary Frazer Vaughn
W. Grady Walter II and
Melissa Kirtley
Matthew and Jennifer Watkins
Kent and Sarah Whitworth
Kory Wilcoxson
Harvie and Nellie Wilkinson
Bobbie Lee Wilson
Nancy Wolf
Peggy Workman
Evelyn Zolondek

Your Name is Important! We have carefully reviewed the names listed in this newsletter. However, in a listing of this length, errors may occur. If your name has been omitted, misspelled or incorrectly listed, please accept our apology and bring the error to our attention so that we may correct our records. Call the Museum at 859-440-1582 or email mandy.higgins@lexhistory.org.

PHOTO CREDITS for Major Milestones:

MILWARD FUNERAL DIRECTORS—1997AV027, The Milward Funeral Carriage, James Edwin Weddle Photographic Collection, 1948-1981, University of Kentucky Special Collections Research Center.

THE LEXINGTON CEMETERY—Cemetery Entrance, John P. Malick Collection, LHM Collections.

THE RED MILE—2007au014, The Red Mile Grandstand, University of Kentucky Glass Plate Negative Collection, 1887-1953, bulks 1891-1918, University of Kentucky Special Collections Research Center; 1997AV027, The Standardbred Stable of Memories before 1963 renovation, James Edwin Weddle Photographic Collection, 1948-1989, University of Kentucky Special Collections Research Center.



Lexington History Museum
210 North Broadway, Lexington

Hours: Thursday & Friday Noon - 4:00 pm
Saturday 10:00 am - 4:00 pm
School & Group Tours available by appointment.

General admission: \$10 | Under 5 years: Free
Special rates available for seniors, military and groups.

The Bluegrass Historian *originated as a small format newspaper in July 2000 and reprised in this new color format in Spring 2022. The early versions were newsprint—edited and published by Lexington History Museum's first Executive Director, Ed Houlihan. Ed was instrumental in the Museum's original vision, establishing it in the old courthouse building and guiding it during the early years until his death in 2008.*